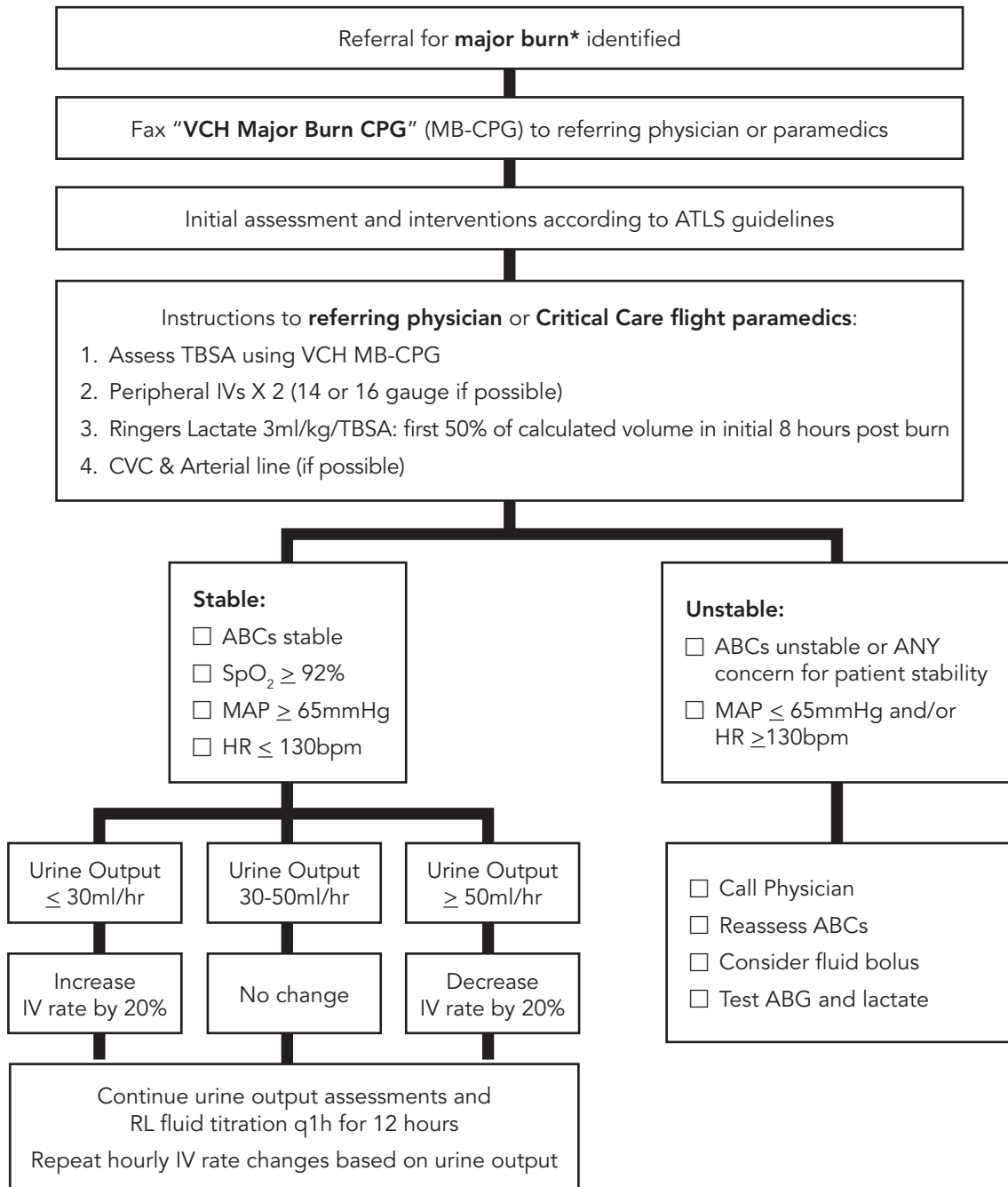


First 12 Hours Post Burn Adult Major Burns Clinical Practice Guidelines

Please note that this is a guideline only, not a substitute for clinical judgement.



*** Major Burn:**

- ≥ 20% TBSA partial and/or full thickness any age
- ≥10% TBSA partial and/or full thickness age ≤ 10 or ≥ 50
- Burns to hands, face, feet, genitalia, joints
- Full thickness burns ≥ 5% TBSA any age
- Electrical burns
- Chemical burns
- Inhalation injury
- Burns associated with major trauma